







Streamlav View

-BCL/-BCR

Baby Changer - Hand Wash Station

 <p>70" to 160" x 22" x 7^{7/8}"</p>	<p>Intersan Faucets:</p>  <p>0.35 gpm</p>	  <p>IAPMO Z124-2011/CSA B45.5-11 IAPMO IGC156 ASME A112.18.2-2011/CSA B125.2-11</p>	 <p>Drain: 1 1/4" Supplies: 1/2" Inlet Pressure: 20 to 100 psi</p>	 <p>ADA TAS Alberta Building Code Ontario Barrier Free BC Building Code Code de Construction Québec (modèle A)</p>
---	---	--	--	---

Material & Construction

The bowl of the sink and the baby changing table surface are made from anti-microbial solid surface. Solid surface is a composite material of acrylic polyester polymer resins and aluminum trihydrate fillers. The material is resistant to stains and burns and complies with ANSI Z124.3. Solid surface cleans easily with Scotchbrite®, household cleaners or fine grit sandpaper. Solid surface is available in 25 colors. The combo includes heavy gauge stainless steel support brackets. The Solidwave View is supplied with one chromed 1 1/4" brass grid strainer.

Anti-microbial

The Solidwave View lavatory and baby changer are manufactured with an anti-microbial agent. The agent is present both on the surface and on the inside of the material and will not dissipate or scratch off. In contact with moisture, anti-microbial ions will be released and effectively kill bacteria.

Standard Equipment

Countertop and baby changing table in anti-bacterial solid surface material, steel mounting brackets, optional stainless steel skirt, tail piece, safety strap, two purse hooks and warning sticker.

Configurations

The baby changing table option can be attached to all Streamlav View lavatory systems. The baby changing table can only be attached to both the left or right side of the lavatory.

LEED Compliance

The Streamlav View contributes to meeting LEED requirements in the following categories:

WEp1 - Water Efficiency
WEC3 - Water Use Reduction

Intersan's faucets have a standard water usage of 0.35 gpm.

Application

The Solidwave View is intended for handwashing only. It is not to be used to dispense water for human consumption either by drinking or use in the preparation of food or beverages.

Warranty



Warranty: 5 years limited warranty on material and 1 year limited warranty on components.

SAMPLE SPECIFICATION

Fixture shall include an integral baby changing table with safety strap. The baby changing table shall be 40" by 22" and include two integral hooks. The baby changing table shall be made of anti-microbial solid surface



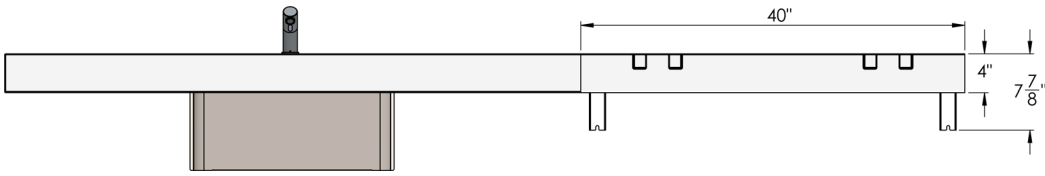
Can only be ordered in combination with a Solidwave View Lavatory System



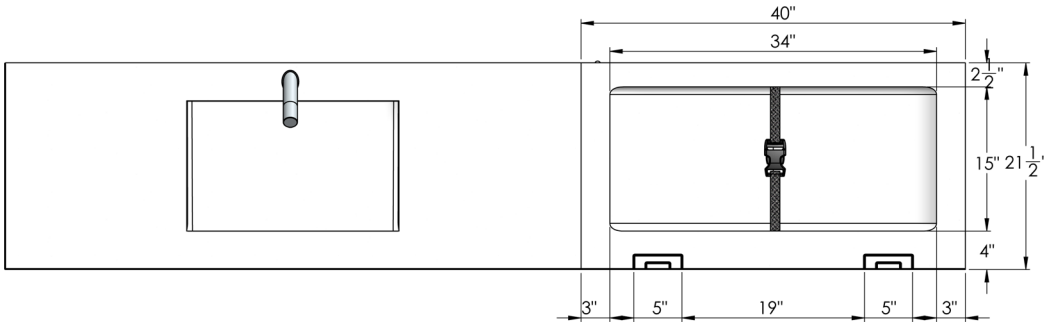
WARNING: Cancer and Reproductive Harm
www.P65Warnings.ca.gov

001	Base Model Number (must specify)
<input type="checkbox"/>	-BCL Baby Changer on Left Side of Solidwave High Low
<input type="checkbox"/>	-BCR Baby Changer on Right Side of Solidwave High Low

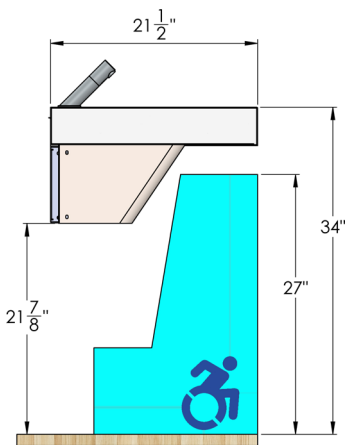
Front View



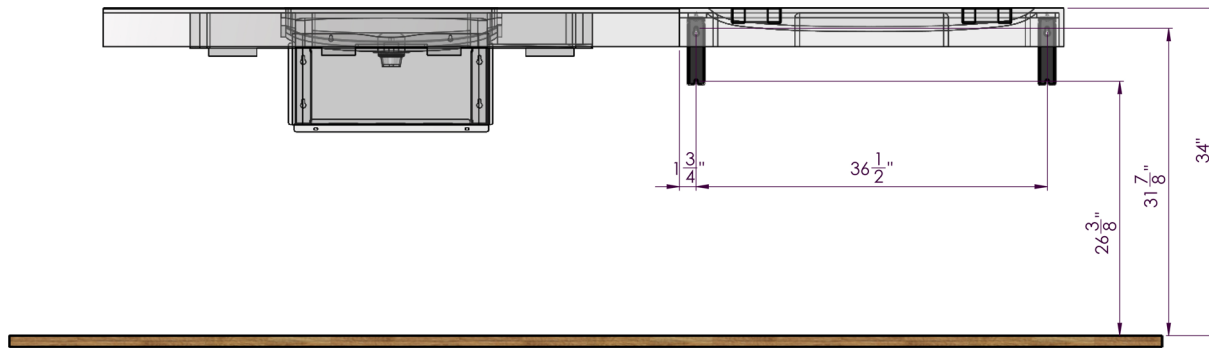
Top View



Side View



Rough-In Dimensions



WARNING: Be sure to use anchors with a pull out strength of 1000 lbs. Additional reinforced backing behind the wall might be required to properly mount the baby changing station and lavatory system.



WARNING: Every Solidwave High-Low with the baby changing station option is supplied with a warning sticker. It is very important that the sticker is placed right above the baby changing station. Failing to do so might result in serious injury.

WARNING

WARNING Never leave child unattended.

WARNING Avoid serious injury from falling or sliding out. Always use restraint.

WARNING Designed for infants only. Age up to 3.5 years and weighing less than 50 lb. Keep one hand on the child at all times.

Intersan Manufacturing Company - www.intersanUS.com

Height Adjustments

Standard	Rim Height	Adjustment of A, B& W
ADA & TAS Adult	34"	None
ADA Juvenile, Age 6-12	31"	Subtract 3" from height in drawing
TAS, Grades 6 through 8 or 9	32"	Subtract 2" from height in drawing
TAS, Grades Pre-K through Grades 5 or 6	30"	Subtract 4" from height in drawing
Alberta and BC Building Code	865 mm	None
Ontario Barrier Free	840 mm	Subtract 24 mm (1") from height in Drawing
Code de Construction de Quèbec	865 mm	Aucun